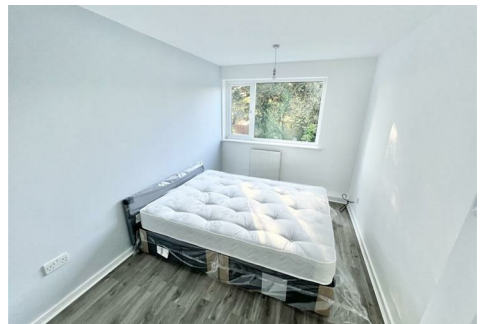




RE/MAX

PROPERTY HUB



151 Myton Drive, Solihull, B90 1HF

£900

AVAILABLE NOW* *OPEN HOUSE FRIDAY 24TH FEBRUARY AT 6PM

RE/MAX are delighted to offer this well presented two bedroom ground floor maisonette in a cul-de-sac location.

The property comprises of a lounge, new kitchen with integrated appliances, conservatory, two double bedrooms and a family bathroom.

The property also benefits from being redecorated throughout and having a large private rear garden.

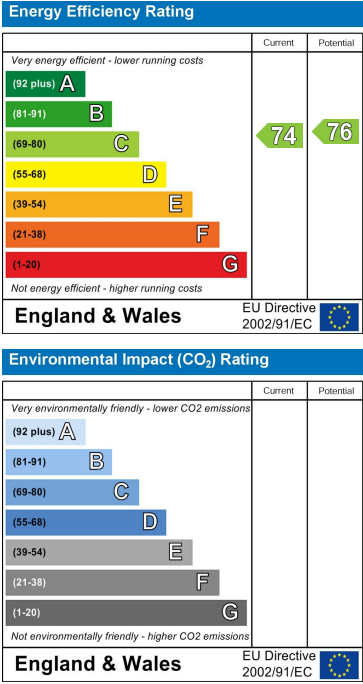
Please call or email to book in a viewing!

Floor Plan

Area Map



Energy Efficiency Graph



These particulars, whilst believed to be accurate are set out as a general outline only for guidance and do not constitute any part of an offer or contract. Intending purchasers should not rely on them as statements of representation of fact, but must satisfy themselves by inspection or otherwise as to their accuracy. No person in this firms employment has the authority to make or give any representation or warranty in respect of the property.